



Brookfield Place Calgary

JUNE 3, 2014

Brookfield



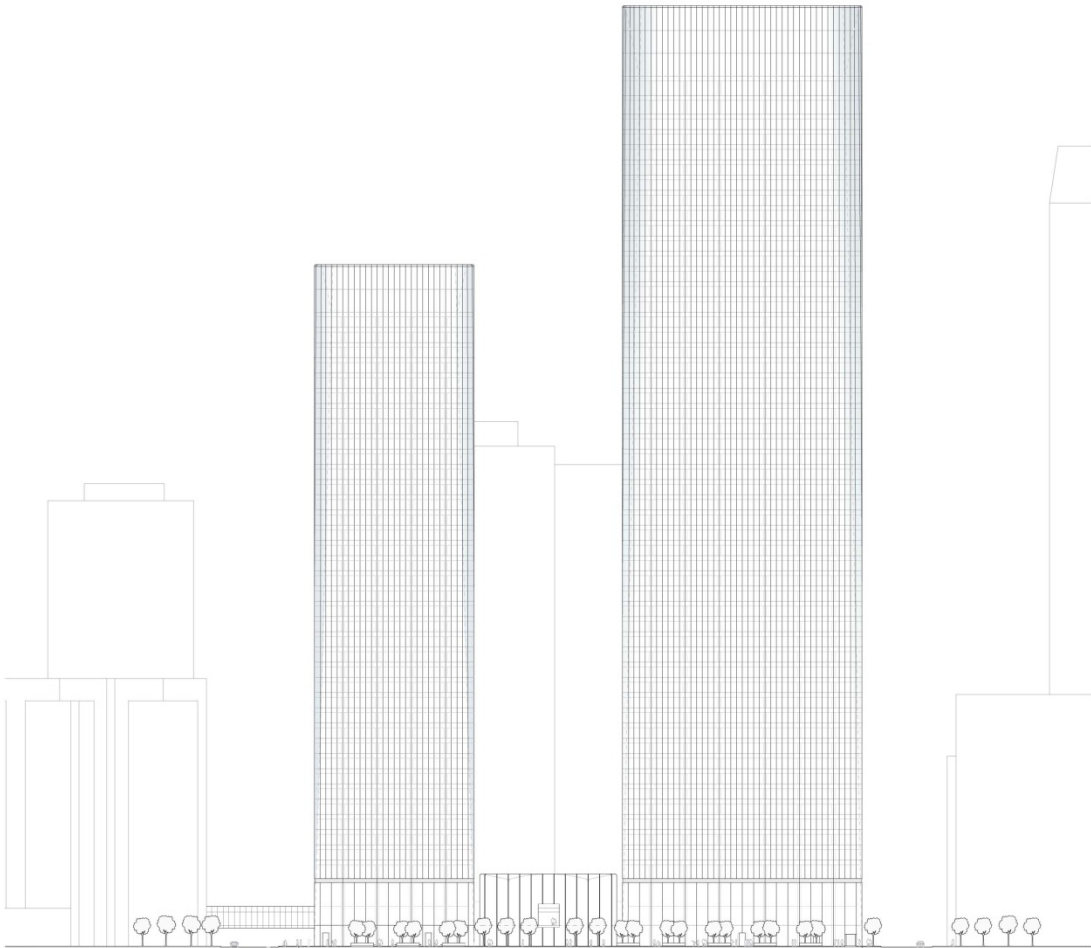
MASTERPLAN

EAST TOWER

- 56 Floors
- Rentable Area: 1 418 000 sf

WEST TOWER

- 41 Floors
- Rentable Area: 1 006 000 sf



WEST TOWER

EAST TOWER

estimated based on ansi/boma z65.1 - 1996

BUILDING SECTION

EAST TOWER

HIGH-RISE

- 16 Floors
- Rentable Area: 28 700 sf

MID-RISE

- 17 Floors
- Rentable Area: 27 500 sf

LOW-RISE

- 19 Floors
- Rentable Area: 26 500 sf

WEST TOWER

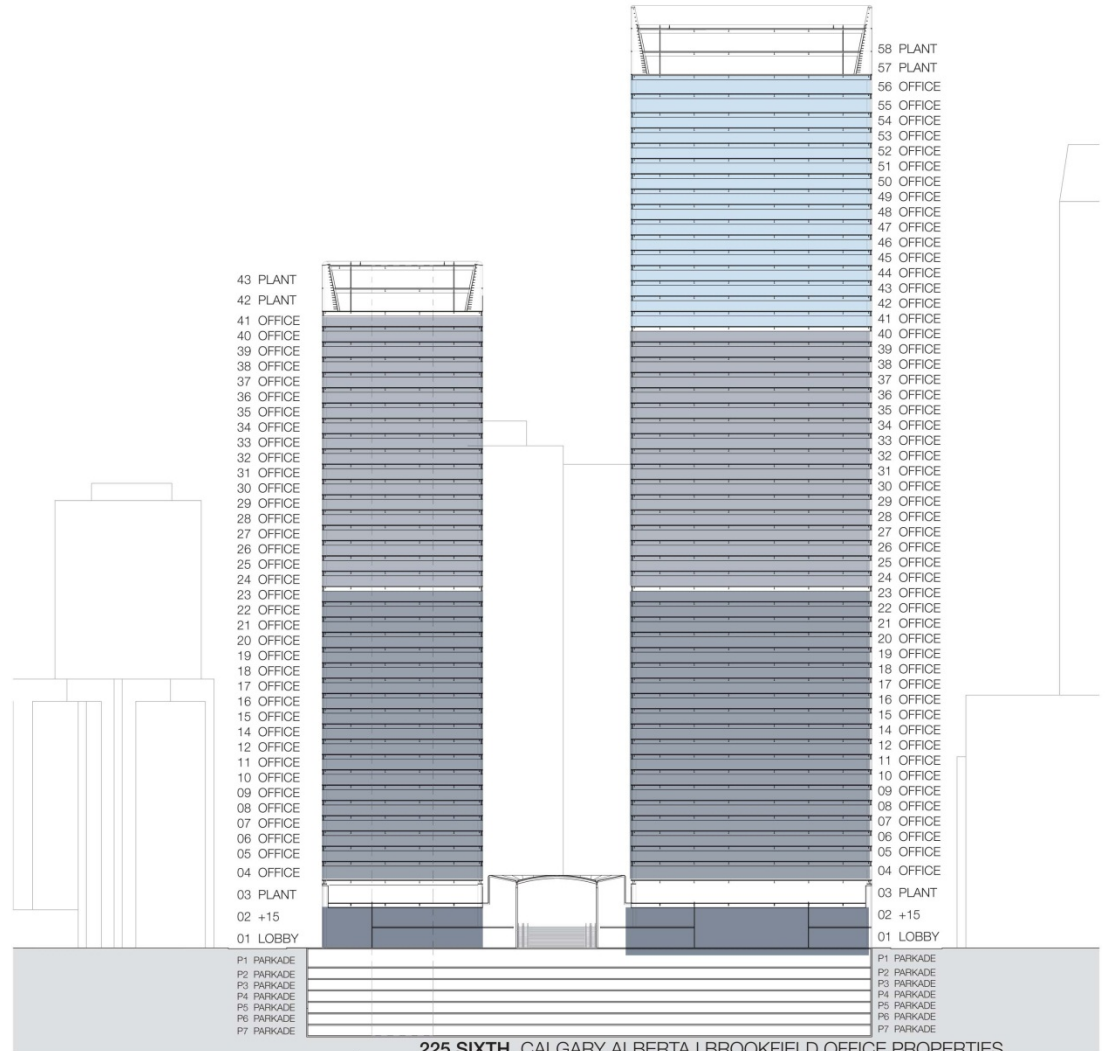
HIGH-RISE

- 18 Floors
- Rentable Area: 28 000 sf

LOW-RISE

- 19 Floors
- Rentable Area: 27 000 sf

estimated based on ansi/boma z65.1 - 1996











Brookfield