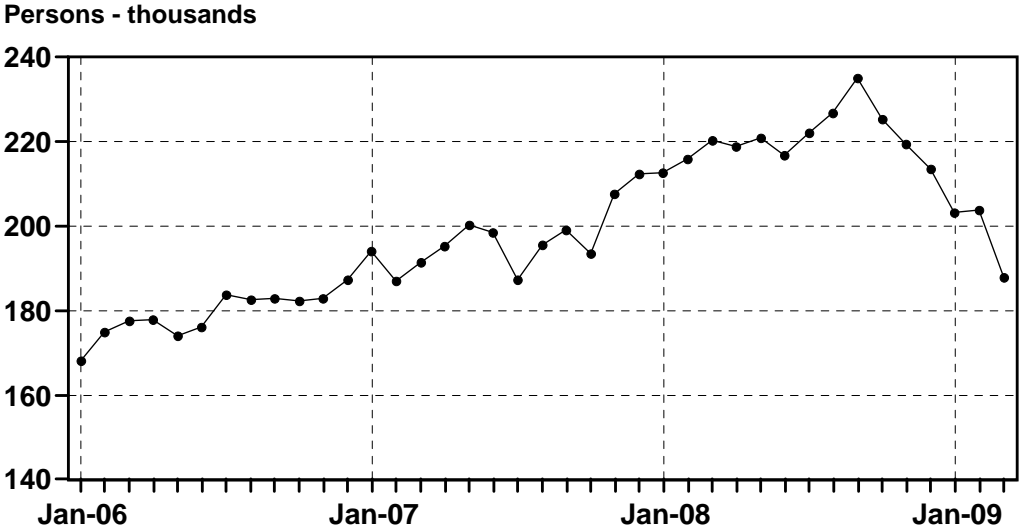




B.C. Construction Industry Employment,
Seasonally Adjusted,
January 2006 - March 2009

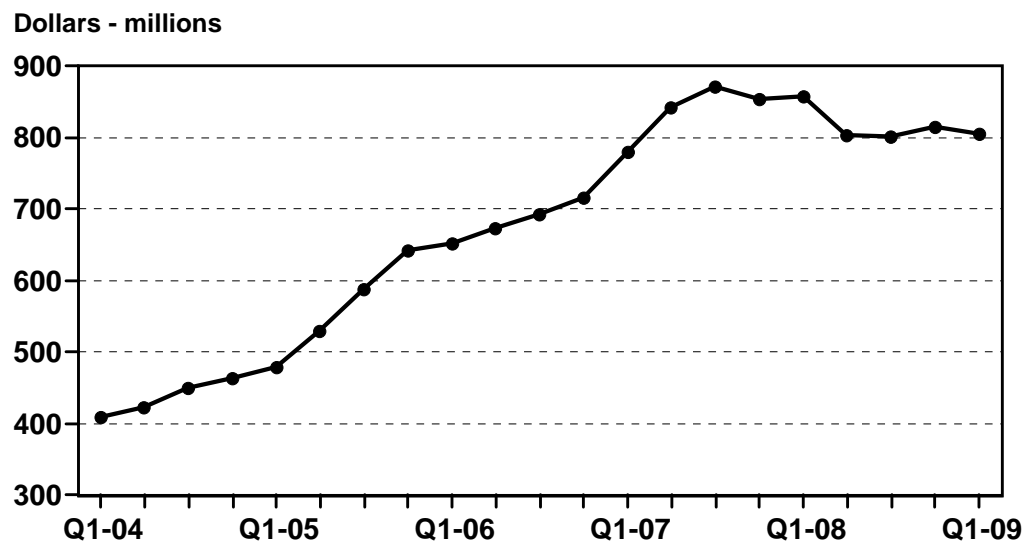


Source: Statistics Canada.





Total Investment in Non-residential Building
Construction, Vancouver CMA,
Seasonally adjusted, Q1-2004 to Q1-2009

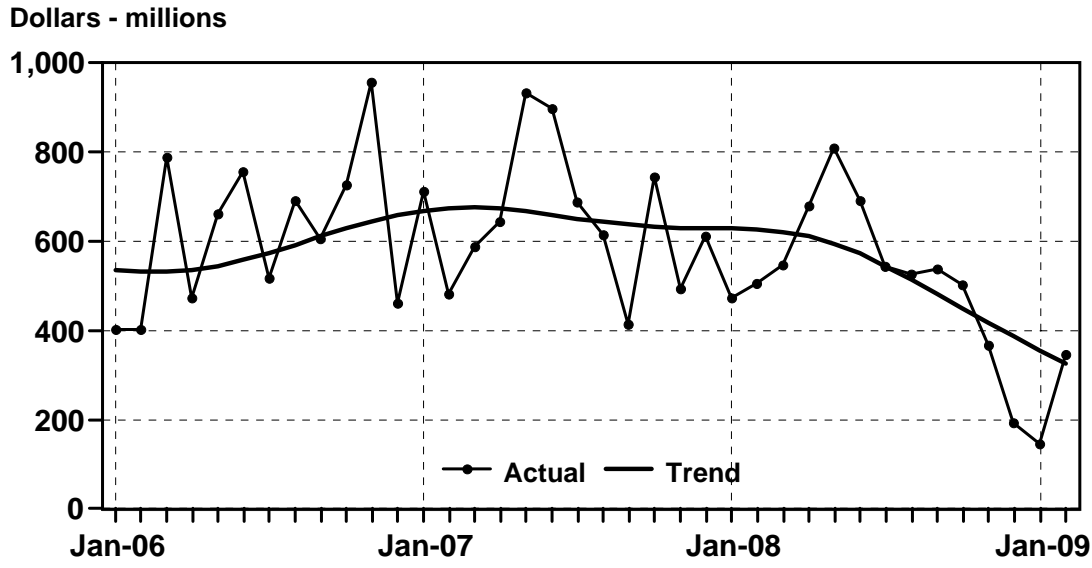


Source: Statistics Canada.





**Total Building Permits Issued,
 Lower Mainland-Southwest Region
 January 2006 - February 2009**



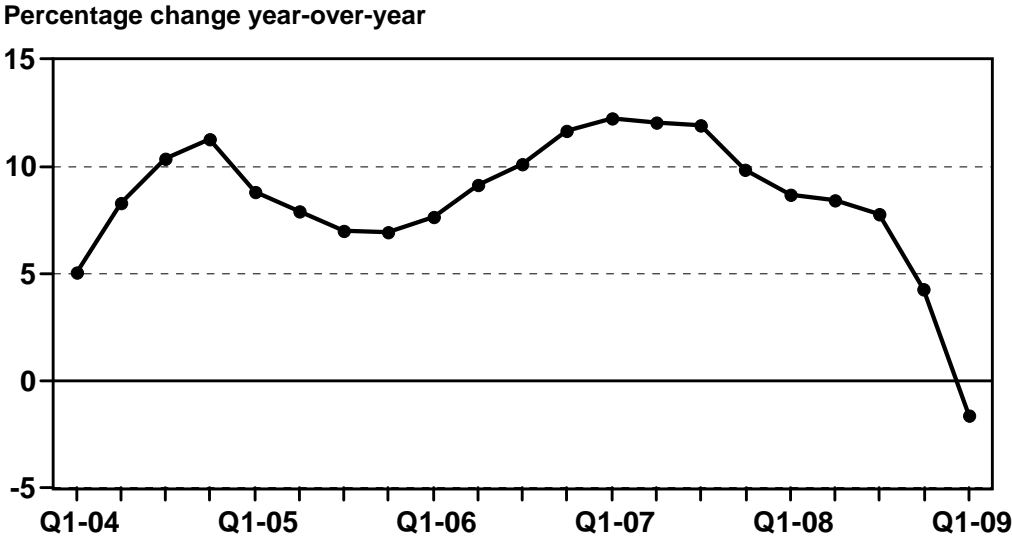
Source: Statistics Canada.



Vancouver Regional Construction Association



Non-residential Building Construction Price
Inflation Rate, Vancouver CMA,
Q1-2004 to Q1-2009



Source: Statistics Canada.

